

MORRISON MAIERLE, INC.
An Employee-Owned Company

Engineers
Surgeons
Scientists
Planners

2880 Technology Blvd. W.
Bozeman MT 59718
Phone: (406) 597-0721
Fax: (406) 322-9702

CONTRACT NO. MORRISON-MAIERLE, INC. 2009-001

DRAWN BY: DC
CHECK BY: EN
APPRE. BY: KW
DATE: 09/2/09

PPL MONTANA
MYSTIC LAKE HYDROELECTRIC PROJECT
FERC NO. 2301
MONTANA

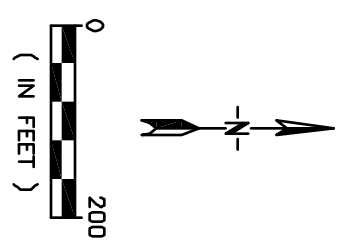
PROJECT NO.
4421.002

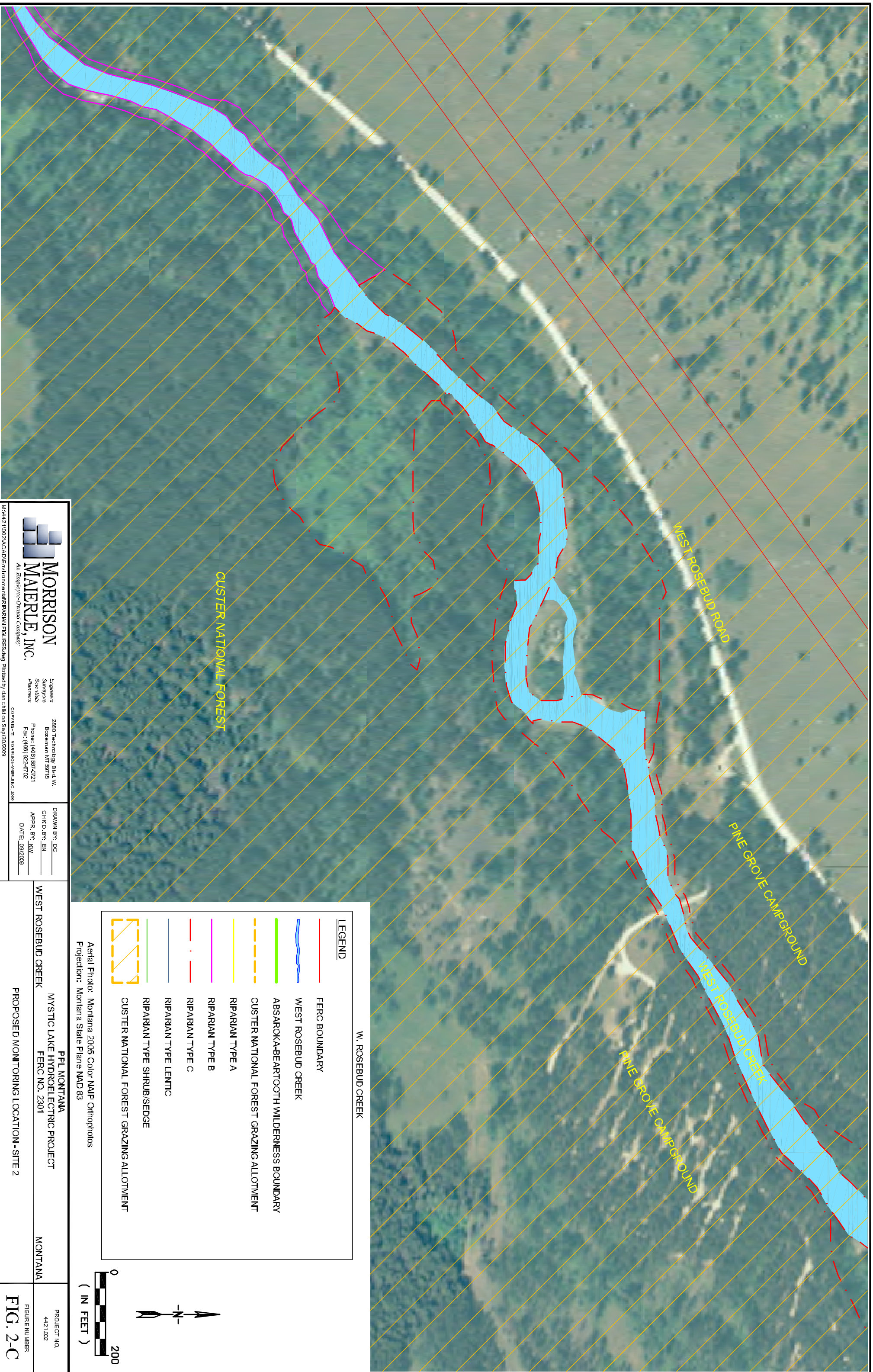
FIGURE NUMBER
FIG. 2-B

LEGEND

| | |
|--|--|
| | FERC BOUNDARY |
| | WEST ROSEBUD CREEK |
| | ABSAROKA-BEARTOOTH WILDERNESS BOUNDARY |
| | CUSTER NATIONAL FOREST GRAZING ALLOTMENT |
| | RIPARIAN TYPE A |
| | RIPARIAN TYPE B |
| | RIPARIAN TYPE C |
| | RIPARIAN TYPE LENTIC |
| | RIPARIAN TYPE SHRUB/SEDGE |
| | CUSTER NATIONAL FOREST GRAZING ALLOTMENT |

Aerial Photo: Montana 2005 Color NAIP Orthophotos
Projection: Montana State Plane NAD 83





MORRISON MAIERLE, INC.
An Employee-Owned Company

Engineers
Surgeons
Scientists
Planners

2880 Technology Blvd. W.
Bozeman MT 59718
Phone: (406) 597-0721
Fax: (406) 322-9702

CORPORATE: MORRISON-MAIERLE, INC. 2009

DRAWN BY: DS
CHECK BY: EM
APPRE. BY: KW
DATE: 09/2/09

PPL MONTANA
MYSTIC LAKE HYDROELECTRIC PROJECT
FERC NO. 2301

MONTANA

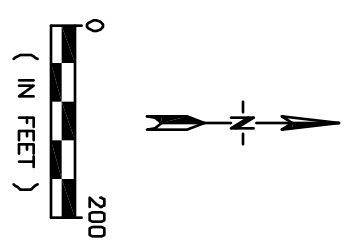
PROJECT NO.
4421.002

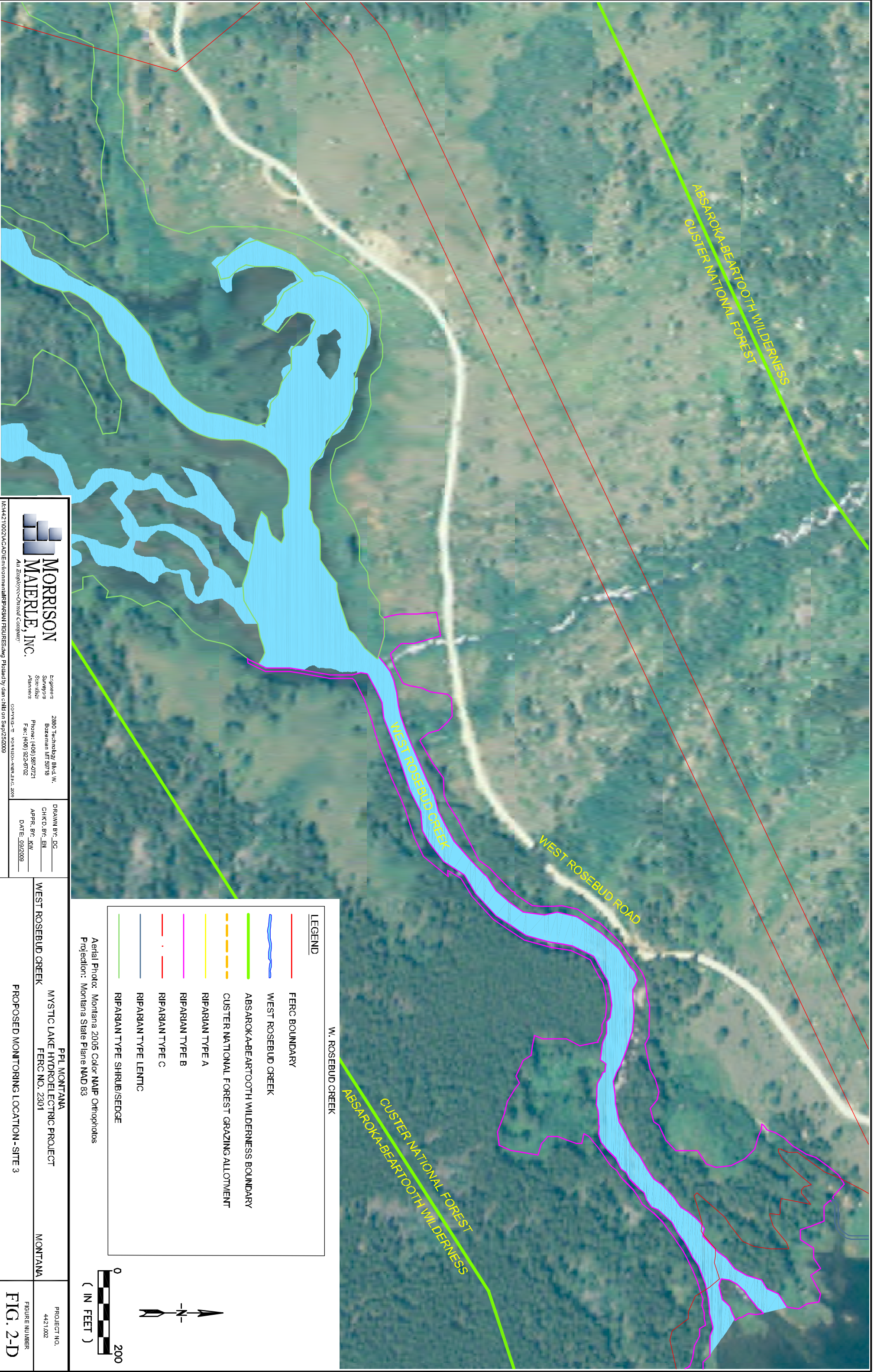
FIGURE NUMBER
FIG. 2C

LEGEND

- FERC BOUNDARY
- WEST ROSEBUD CREEK
- ABSAROKA-BEARTOOTH WILDERNESS BOUNDARY
- CUSTER NATIONAL FOREST GRAZING ALLOTMENT
- RIPARIAN TYPE A
- RIPARIAN TYPE B
- RIPARIAN TYPE C
- RIPARIAN TYPE LENTIC
- RIPARIAN TYPE SHRUB/SEDGE
- CUSTER NATIONAL FOREST GRAZING ALLOTMENT

Aerial Photo: Montana 2005 Color NAIP Orthophotos
Projection: Montana State Plane NAD 83





ABSAROKA-BEARTOOTH WILDERNESS
 CUSTER NATIONAL FOREST

WEST ROSEBUD ROAD

WEST ROSEBUD CREEK

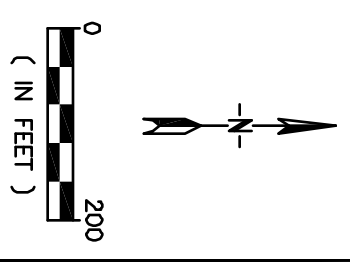
W. ROSEBUD CREEK


CUSTER NATIONAL FOREST
 ABSAROKA-BEARTOOTH WILDERNESS

LEGEND

- FERC BOUNDARY
- WEST ROSEBUD CREEK
- ABSAROKA-BEARTOOTH WILDERNESS BOUNDARY
- - - CUSTER NATIONAL FOREST GRAZING ALLOTMENT
- RIPARIAN TYPE A
- RIPARIAN TYPE B
- · - RIPARIAN TYPE C
- RIPARIAN TYPE LENTIC
- RIPARIAN TYPE SHRUB/SEDGE

Aerial Photo: Montana 2005 Color NAIP Orthophotos
 Projection: Montana State Plane NAD 83





**MORRISON
 MAIERLE, INC.**
An Employee-Owned Company

Engineers
 Surveyors
 Scientists
 Planners

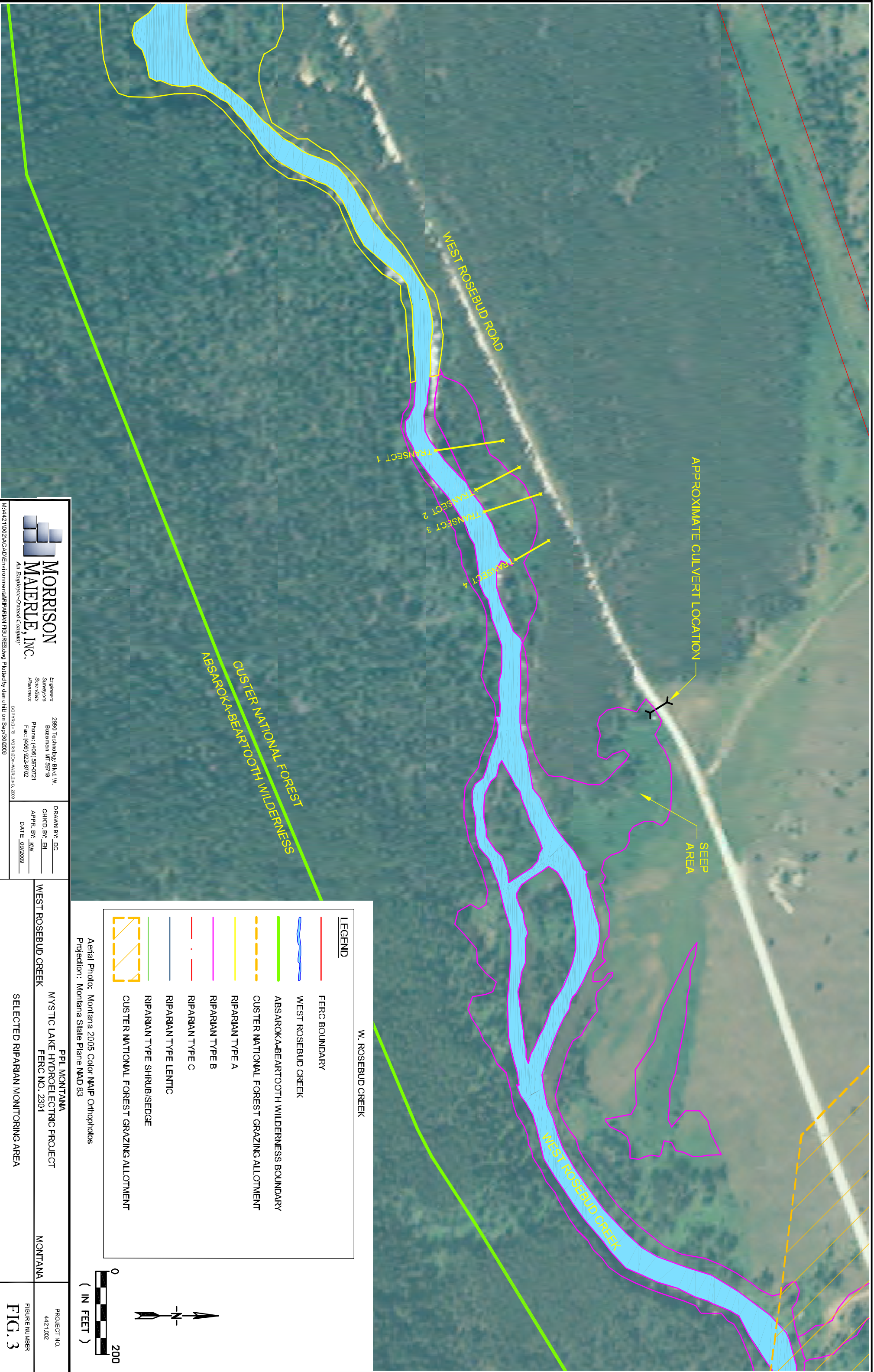
2880 Technology Blvd. W.
 Bozeman MT 59718
 Phone: (406) 597-0721
 Fax: (406) 322-9702

CORPORATE: MORRISON-MAIERLE, INC. 2009

DRAWN BY: DC
 CHECK BY: EM
 APPR. BY: KW
 DATE: 09/2/09

| | |
|---|---|
| WEST ROSEBUD CREEK PPL MONTANA MYSTIC LAKE HYDROELECTRIC PROJECT FERC NO. 2301 MONTANA PROPOSED MONITORING LOCATION - SITE 3 | PROJECT NO. 4421.002 FIGURE NUMBER FIG. 2-D |
|---|---|

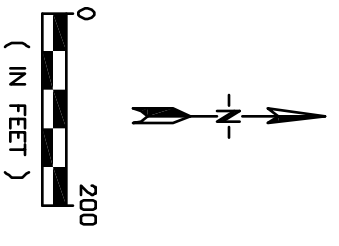
M:\421002\CAD\Environment\Map\RAW\FIGURES\AW Plotted by dan child on 8/17/2009



LEGEND

| | |
|--|--|
| | FERC BOUNDARY |
| | WEST ROSEBUD CREEK |
| | ABSAROKA-BEARTOOTH WILDERNESS BOUNDARY |
| | CUSTER NATIONAL FOREST GRAZING ALLOTMENT |
| | RIPARIAN TYPE A |
| | RIPARIAN TYPE B |
| | RIPARIAN TYPE C |
| | RIPARIAN TYPE LENTIC |
| | RIPARIAN TYPE SHRUB/SEDGE |
| | CUSTER NATIONAL FOREST GRAZING ALLOTMENT |

Aerial Photo: Montana 2005 Color NAIP Orthophotos
 Projection: Montana State Plane NAD 83



MORRISON MAIERLE, INC.
 An Employee-Owned Company

Engineers
 Surveyors
 Scientists
 Planners

2880 Technology Blvd. W.
 Bozeman MT 59718
 Phone: (406) 597-0721
 Fax: (406) 522-6702

CONTRACT: W-14421002-NAIP-83
 W-14421002-NAIP-83

DRAWN BY: DG
 CHECKED BY: EN
 APPR. BY: KW
 DATE: 09/22/09

| | | |
|-----------------------------------|---|--------------------------------|
| WEST ROSEBUD CREEK | PPL MONTANA MYSTIC LAKE HYDROELECTRIC PROJECT FERC NO. 2301 | MONTANA |
| SELECTED RIPARIAN MONITORING AREA | | PROJECT NO. 4421002 |
| | | FIGURE NUMBER FIG. 3 |

M:\4421002\NAIP\CAD\Environment\Map\RIPARIAN\FIGURE3.dwg Plotted by dan chih on Sep/30/2009