

PPL MONTANA, LLC
THOMPSON FALLS UPSTREAM FISH LADDER PROJECT
TECHNICAL ADVISORY COMMITTEE MEETING
 December 13, 2011 @ 10:00 AM – 4:00 PM
 Whitefish Credit Union, Thompson Falls, Montana

PPL Montana, LLC (PPLM) held the Thompson Falls Technical Advisory Committee (TAC) on December 13, 2011 at the Whitefish Credit Union in Thompson Falls. The meeting started at 10:00 AM and was adjourned at 4:00 PM.

MEETING ATTENDEES

Name	Agency	Email	Phone (406)
Brent Mabbott	PPL Montana, LLC	lbmabbott@pplweb.com	533-3447
Frank Pickett	PPL Montana, LLC	fjpickett@pplweb.com	533-3445
Jon Jourdonnais	PPL Montana, LLC	jhjourdonnais@pplweb.com	490-1802
Andy Welch	PPL Montana, LLC	atwelch@pplweb.com	533-3412
Jeff Monaco	PPL Montana, LLC	J_p_monaco@yahoo.com	370-9030
Wade Fredenberg	USFWS	Wade_fredenberg@fws.gov	758-6872
Jim Vashro	MFWP	jvashro@mt.gov	751-4550
Kenny Breidinger	MFWP	kbreidinger@mt.gov	827-9320
Jay Stuckey	MFWP	jstuckey@mt.gov	827-9205
Ladd Knotek	MFWP	lknotek@mt.gov	542-5506
Randy Apfelbeck	MDEQ	rapfelbeck@mt.gov	444-2709
Craig Barfoot	CSKT	craigb@cskt.org	675-2700 ext. 2295
Joe DosSantos	Avista Corporation	Joe.dossantos@avistacorp.com	847-1284
Shana Bernall	Avista Corporation	Shana.bernall@avistacorp.com	847-1293
Ginger Gillin	GEI Consultants	ggillin@geiconsultants.com	240-3231
Kristi Webb	Steigers Corporation	kristi.webb@steigers.com	203-4827
Pelah Hoyt	Five Valley Land Trust	pelah@fvlt.org	549-0755

Announcements

Andy Welch started working as a support compliance professional for PPL Montana on June 20, 2011 and will be replacing Frank Pickett. Frank Pickett is retiring at the end of 2011 after 33 years of service with PPL Montana.

Proposal for Fish Access Enhancement

- Discussion of possible improvements for fish access to the ladder
 - Brent Mabbott, PPLM, proposes to reconfigure the channel along the right bank (river right) immediately below the fish ladder in an effort to improve fish access to the ladder during low flows (less than approximately 20,000 cfs).
 - The proposal includes the movement of native rock material that was left in the channel following the completion of blasting/construction of the ladder. The material would likely be moved to the sides of the channel or further downstream.
 - PPL Montana will gather some additional information, including some measurements of the area to impacted, elevations, volume of material to be

displaced, size of material, etc. After additional information of the proposed action is available, PPL Montana will coordinate with agencies to discuss feasibility of the proposed activity.

- An alternative approach may include modifying the main channel through the falls.
- PPL Montana will evaluate both options.
- Permitting requirements for the proposed activity may include, but is not limited to the following:
 - Natural Streambed Permit (310 Permit) From Green Mountain Conservation District
 - Sanders County Floodplain Permit
 - 318 Authorization from Montana Department of Environmental Quality
 - Section 404 Permit from United States Corps of Engineers

2011 Ladder Operations Update

- A presentation was provided summarizing results from 2011 ladder operations.
 - The information presented in the meeting will be incorporated in the 2011 Annual Report.
 - Summary covered: total number of fish captured, number of species, size of species, timing of movement to ladder, water temperature, streamflow, recaptures, fallback, weir vs. orifice, and attractant vs. no attractant flow.
- Brent described challenges of operating the ladder at higher flows. Operators were able to manage spill at the dam so that the ladder could be in operation when flows were near 75,000 to 80,000 cfs.
- Brent will add a fish counter to the ladder. The counter will be able to detect fish entering the holding pool, but not their species. One reason for installing a counter will be so that the biologists will be able to tell remotely, via their computers, if there are fish in the holding pool.

2011 Baseline Fisheries Data Collection and Results

- Baseline fisheries data were presented via power point presentation. These data will be included in the 2011 Annual Report.
 - Gillnetting data have been collected every October from 2004 through 2011. A total of 33 fish were captured via gillnetting in 2011.
 - Spring electrofishing (Upper Section near Thompson River and Lower Section in Thompson Reservoir) was complete in 2011.
 - Fall Electrofishing completed in 2011 included:
 - Clark Fork River Above Islands
 - Clark Fork River Paradise to Plains
 - Ladd Knotek recommended including electrofishing data collected near St. Regis in the 2011 Annual Report. David Schmetterling will be contacted to get a copy of this information.

2011 Water Quality Results

- Total Dissolved Gas (TDG) power point presentation was provided by Ginger Gillin, GEI.

- In 2011 there was an increase in TDG observed at the Birdland Bay Bridge and High Bridge monitoring stations after June 9. The higher TDG is believed to be correlated to the removal of the stanchions at Thompson Falls Dam.
- TDG levels prior to June 9 were at or less than previous years. There was no evidence that indicates operating the Main Dam spillway to enhance fish attraction to the ladder had any detrimental effect on TDG in 2011.
- In 2010, spill began using the Dry Channel Dam as the primary spillway resulting in higher TDG per cfs than using the Main Dam spillway. Using the Dry Channel does not result in reduced TDG at Birdland Bay Bridge.
- The TDG summary presented at the meeting will be included in the 2011 Annual Report.
- Gas Bubble Trauma (GBT) Monitoring
 - PPLM electrofished between Thompson Falls Dam and the Hwy 200 bridge on:
 - May 18, 23, and 31
 - Streamflows in May were near 75,000 cfs
 - June 7, 14, and 22
 - Streamflows in June were near 92,000 cfs
 - Symptoms of GBT were detected in 7% of fish examined. Most symptoms were mild, with the exception of one rainbow trout which had severe GBT.
- A summary of the GBT findings as presented in the meeting via power point presentation will be included in the 2011 Annual Report.

2011 Thompson River

- Thompson River Drainage Database
 - Data collected from USFS, MFWP, Avista, and Plum Creek
 - An excel file was distributed to TAC members for review and reviewed during the meeting that summarizes available data for the Thompson River drainage.
 - MDEQ has additional data that GEI/Steigers will add to the database prior to finalization.
 - Once the database and excel summary file are finalized, all of the reports/data will be available to TAC members upon request.
 - TAC will review information provided in the excel file and summary worksheets to assist in identifying additional studies/measures to take in the Thompson River drainage.

2011 TAC Funded Proposal

- Genetics
 - Funds (total of \$5,582) were spent in 2011 on genetics testing on bull trout collected in Fishtrap Creek.
 - A summary of 2011 genetics results funded by TAC will be included in the 2011 Annual Report.

2012 Funding Proposals

1. Genetics - \$10,000 – PPL Montana/TAC
 - **TAC approved** \$10,000 budget for 2012 genetics testing for bull trout.

- Funding is strictly for genetics analysis and does not cover labor hours for the crews collecting samples.
- Several of the baseline genetics need to be updated with new samples.
- 2. Consultant support for habitat evaluation in the Thompson River in 2012 - \$10,000 to \$20,000 – PPL Montana
 - **TAC approved** PPL Montana's proposal to find a consultant to assist in evaluating habitat projects in the Thompson River drainage.
- 3. Phase I: Land Purchase in Fish Creek Drainage- \$115,300 – MFWP/Five Valley Land Trust
 - Purchase of private inholdings along the lower mainstem of Fish Creek that are at high risk of development.
 - Property would be transferred to MFWP for inclusion in the Fish Creek Wildlife Management Area, but will be included within the State Park.
 - Under the proposal TAC Funding would be matched with financial contributions from Five Valley Land Trust, MFWP Conservation Trust and contributions from other conservation organizations.
 - This proposal does not include Phase II.
 - Proposal is attached to the meeting minutes as an Appendix.
 - **TAC approved** the \$115,300 proposal to assist in the purchase of the private inholdings.
- 4. Educational Signs Regarding Illegal Introduction of Walleye – MFWP
 - PPL Montana will support MFWP's project through other funding.
 - Proposal is attached to meeting minutes as an Appendix.
 - **TAC did not approve.** This proposal was not accepted to receive TAC Funding.

Summary of 2012 TAC Funded Projects

- \$10,000 – Bull Trout Genetics
- \$10,000 – \$20,000 Consultant for Thompson River Drainage Evaluation
- \$115,300 – Fish Creek Land Purchase
- **Total Dollars Allocated in 2012: \$135,300 - \$145,300**

Proposed 2012 Activities

- Bull trout Transport Plan in 2012
 - Avista will transport bull trout captured downstream of Cabinet Gorge Dam that are assigned to Region 4 to the Noxon Pool in 2012
 - Exceptions to the transport plan described above may occur during the summer season when water temperatures are warmer and may result in lethal conditions or stress
 - MFWP, Avista, and PPL MT will coordinate as necessary to address any concerns or issues regarding bull trout transport that come up during the 2012 year
- 2012 Water Quality Data Collection
 - TDG will be collected in 2012 in three locations:
 - Above Dam, High Bridge, and Birdland Bay Bridge
- 2012 – Jeff Monoco will develop a supplemental Ladder Operations Manual that will be outlined in layman's terms and include photos of ladder operations. Instructions will also include start up and winterizing procedures.
- 2012 Baseline Data Collection

- Spring Electrofishing (near Thompson River – Upper Section, Thompson Reservoir – Lower Section)
- Fall Electrofishing (Above Islands, Between Paradise and Plains)
- Fall Gillnetting (Reservoir)
- GBT monitoring below Thompson Falls Dam when flows reach 50,000 cfs or greater.
- 2012 Spring Electrofishing Below Thompson Falls Dam
 - PPL MT will continue to electrofish below the dam in the spring. All fish species will be PIT tagged to monitor movement patterns and timing up the ladder.
- 2012 Ladder Operations
 - Collect Fish Species information
 - All fish with the exception of lake trout and walleye may be passed over the dam
 - Continue to evaluate Orifice Vs. Weir modes
 - Weekly cycle
 - Continue to PIT tag salmonids that ascend ladder
- 2012 Thompson River Drainage
 - PPLM will coordinate with MFWP, USFWS, USFS, Avista, and Plum Creek to identify some on-the-ground projects in the Thompson River drainage that would benefit/improve/enhance bull trout habitat
- 2012 TAC Funded Projects
 - Bull Trout Baseline Genetics Sampling
 - Fish Creek Private Inholdings Land Purchase
 - Consultant Fee to Evaluate Habitat Projects in Thompson River

Other activities discussed for 2012

- Radio tags in juvenile bull trout out-migrating from Thompson River in 2012
 - This activity will not be completed in 2012.
- Radio tags in bull trout that Avista transports to Noxon Pool
 - No radio tags will be but in bull trout transported to the Noxon pool.
 - Bull trout will only have PIT tag. Adult bull trout will receive a right pelvic clip.
 - Note that juvenile bull trout captured in weir and screw traps (Cabinet Gorge and Noxon Reservoir tributaries) receive an adipose clip for an Avista study evaluating PIT tag retention in relation to capture to adult bull trout below Cabinet Gorge Dam. Therefore, adult bull trout captured below Cabinet Gorge Dam will receive a right pelvic clip.
- Coordination of PIT Tag Database
 - During the meeting, an automated data collection system was presented. TAC members believe management of the database is up to PPL Montana. PPL Montana will evaluate automated options for the 2012/2013 season.
 - PPL Montana will not be including half duplex PIT tags in 2012. This issue (full and half duplex PIT tags) will be addressed in 2012.

TASKS FROM MEETING

GEI/STEIGERS

- Complete Draft of 2011 Annual Report for distribution to TAC members by February 15, 2012
 - Coordinate with Avista to get the information on the bull trout transported and tracked in 2011.
 - Coordinate with MFWP to get electrofishing data summary for St. Regis area.
 - Coordinate with MFWP to get 2011 Fishtrap Creek data summary.
- Coordinate with PPLM to set a meeting between PPLM, USFS, USFWS, MFWP, Avista, and Plum Creek to discuss projects in Thompson River Drainage
- Coordinate with MDEQ to include MDEQ Thompson River data into the Thompson River Drainage Database.
- Coordinate with PPLM to explore option for modifying the river channel to enhance fish passage along the right bank (river right).

PPL MONTANA

- MOU expires on December 31, 2013. Thompson Falls TAC will need to revisit the terms of the MOU in 2012.
- Determine if an automated data management system should be implemented in future.
- Review options for enhancing TFalls main channel or modifying right bank to enhance fish access to ladder. Gather additional information (elevation, size of material, area of impact, etc.) to discuss with agencies the potential to modify the channel (river right) to enhance fish access to the ladder. Coordinate with GEI/Steigers for regulatory support.

NEXT TAC MEETING

- **May 8, 2011 (Tuesday) in Thompson Falls**

2011 ANNUAL REPORT SCHEDULE

Task/ Deliverable	Preparers	Submittal to TAC	TAC Comments Due	Comments Incorporated - Submit to TAC for Final Approval	Finalized with Approval from USFWS Complete	E-File with FERC	E-Archive on Website
ANNUAL REPORTS	PPL Montana, MFWP, GEI, Steigers	21-Feb-12	29-Feb-12	14-Mar-12	23-Mar-12	30-Mar-12	30-Mar-12

APPENDIX
2012 TAC PROPOSALS



FIVE
VALLEYS
LAND
TRUST

P.O. Box 8953 • Missoula, Montana 59807 • (406) 549-0755 • Fax (406) 728-2841
Email: office@fvlt.org • www.fvlt.org

November 18, 2011

Thompson Falls TAC
PPL Montana
45 Basin Creek Road
Butte, Montana 59701

Dear Thompson Falls TAC members,

On behalf of Five Valleys Land Trust, I am pleased to present this opportunity to conserve vital bull trout habitat in the Fish Creek drainage. We are requesting \$115,300 in PPLM Thompson Falls Bull Trout PM&E funding to help purchase private inholdings along the lower main stem of Fish Creek that are at high risk of development. The properties would then be transferred to Montana Fish, Wildlife and Parks for inclusion in the Fish Creek Wildlife Management Area. Under this proposal PPLM Thompson Falls Bull Trout PM&E funds would be matched with financial contributions from Five Valleys Land Trust, the Montana Fish and Wildlife Conservation Trust and contributions from other conservation organizations.

Nearly 30,000 acres of the Fish Creek drainage were recently conserved through the Montana Legacy Project. Unfortunately several key private inholdings could not be included in that conservation effort, and their unprotected status threatens the connectivity that is so essential for bull trout recovery.

Fish Creek supports the largest bull trout population in the middle Clark Fork drainage and the stream system typically contains more redds than the rest of the tributaries in this region combined. Your investment here would permanently protect nearly a mile of Fish Creek and adjoining riparian habitat that are critical for maintaining rearing areas and an intact migratory corridor for bull trout. We hope you will join us in this conservation effort by providing your support.

Best regards,

Grant Kier
Executive Director



Board of Directors: Mary Babson • Lucy Beighle • Sean Benton • Jim Brown • John Corwin • Jim Cusker • Mary Lynn Eiseman
Julie Gardner • Kathy McAllister • Jeffrey Roth • Amber Sherrill • Don Sokoloski
John Talbot • Chuck Tribe • Jim Valeo • Pam Volkmann

Format for Cost-Share Proposals using PPLM Thompson Falls Bull Trout PM&E Funding

Project Title: Main Stem Fish Creek Land Acquisition – Phase I

Proposal Submitted by: Five Valleys Land Trust (Applicant) - Pelah Hoyt
Montana Fish, Wildlife & Parks – Ladd Knotek

Location of Proposed Project: Properties located on main stem of Fish Creek, just downstream of confluence of South and West Forks (see attached maps).

Legal: T14N, R24W, Section 31, NW1/4 (148 acre Hulme Property – Phase I)
T14N, R25W, Section 36, NE1/4 (80 acre Babcock Property – Phase II)

Total Project Cost: \$230,600* - Phase I

* Does not include in-kind staff costs of Five Valleys & FWP

* See expanded budget sheet for itemized summary of costs in both phases

TAC Funds (Cost-Share) Requested: \$115,300

All proposals must include the following information:

I. Introduction. A brief statement of project to be implemented with pertinent background information.

Fish Creek is the most intact tributary watershed in the middle Clark Fork region and is considered the most valuable stronghold for bull trout and other native fish. The upper drainage is primarily comprised of public lands, most of which are roadless, proposed Wilderness managed by the U.S. Forest Service. Lower elevation tributaries and main stem tracts have traditionally been in mixed ownership, including private corporate timberlands (Plum Creek Timber Company), public lands (DNRC School Trust), and a limited number of small, private inholdings.

In 2010, Montana Fish, Wildlife & Parks (FWP) acquired ~ 28,000 acres of the lower Fish Creek drainage from The Nature Conservancy to form the Fish Creek Wildlife Management Area (WMA) and State Park. These lands represented a portion of the Montana Legacy Project, where The Nature Conservancy purchased all available Plum Creek Timber Company (PCT) holdings within the drainage to conserve fish & wildlife values.

At the time of purchase, several small PCT tracts (inholdings) along the main stem of Fish Creek were on the open market and were not included in the FWP lands acquisition. These properties were subsequently sold to private buyers. Two of these parcels (80 & 148 acres), which lie side-by-side on the lower main stem of Fish Creek, are now being advertised for sale. These parcels contain ~ 40 acres of riparian area and

more than 4,000 feet of Fish Creek channel on a portion of the key migratory corridor and sub-adult rearing area for fluvial bull trout in Fish Creek. The properties currently contain no man-made structures or infrastructure.

The two properties proposed for acquisition have high development potential, particularly along riparian areas on the north side of Fish Creek. Land management activities on similar in-holdings within the WMA indicate that private ownership carries large risk of further subdivision, riparian and channel encroachment, illegal water withdrawal, and general habitat degradation. Less stringent subdivision regulations in Mineral County also make incorporation of natural resource protection and mitigation measures difficult.

The project would permanently protect a significant reach of the main stem of Fish Creek from habitat degradation and facilitate future enhancement activities. This stream system supports the largest fluvial bull trout population in the middle Clark Fork River drainage and typically contains more redds than the rest of the tributaries in this region combined. An intact migratory corridor and rearing area in the main stem is vital to this bull trout population.

II. Objectives. Explicit statement(s) of what is intended to be accomplished.

Acquire key inholding properties on Fish Creek within the Fish Creek WMA in order to protect them from subdivision and development in perpetuity. Properties would be converted to public ownership through incorporation into the WMA. Longer term objectives are to protect and improve habitat conditions for bull trout and other aquatic species using this corridor.

This application proposes purchase of the first of two adjacent properties totaling 228 acres. The first property is currently owned by the Hulme family and includes 148 acres of bare ground (see site map).

III. Methods. Description of how the objectives will be accomplished.

Five Valleys Land Trust (Five Valleys) would purchase the Fork-Hulme and Forks-Babcock inholdings on the main stem of Fish Creek and then donate the properties to FWP. The project would be divided into two phases with Phase I involving purchase of the 148-acre parcel owned by the Hulme family and Phase II involving the purchase of the adjacent 80-acre property owned by the Babcock family.

IV. Schedule. When the project work will begin and end. Include seasonal variations in work schedule.

Five Valleys would negotiate an option agreement with the owners of the Forks-Hulme property in the early months of 2012. Once all necessary due diligence and public review and approval are in place the property would be purchased by Five Valleys using bridge-funding. It would be transferred to FWP as soon as possible thereafter. The

purchase by Five Valleys and transfer to FWP would take place in the Spring or early summer of 2012. Five Valleys requests that funds be dispersed upon our transfer of the property to FWP.

If Phase I of the land acquisition is completed successfully, the Phase II effort would begin in the fall of 2012.

V. Personnel. Who will do the work. Identify the project leader or principal investigator.

Pelah Hoyt, Five Valleys' Conservation Project Manager, will manage this project and transaction. Once the land is purchased by Five Valleys, it would be donated to FWP for inclusion in the Fish Creek WMA. The WMA is managed by Region 2 of FWP under the direction of Mike Thompson (Regional Wildlife Manager) and Mack Long (Regional Supervisor).

VI. Budget must include amounts for the following items:

- Direct Labor
- Direct Overhead
- Travel and Living
- Materials
- Other Direct Expenses
- List all other funding (cost-share and partners) sources and amounts for this project

The following table shows the budget for Phase I of the Main Stem Fish Creek Land Acquisition:

Main Stem Fish Creek Land Acquisition Phase I Budget		
Forks-Hulme (148 acres) Proposed Purchase Price	\$220,000	
Transaction Costs	\$10,600	
Total Costs	\$230,600	
Proposed Funding Sources		
Thompson Falls TAC (requested)	\$115,300	50%
Five Valleys Land Trust (secured)	\$55,000	24%
MT Fish & Wildlife Conservation Trust (requested)	\$25,000	11%
Private fundraising	\$35,300	15%
Total Proposed Funds	\$230,600	100%

Costs related to direct labor, overhead, travel, living and materials would be covered separately by Five Valleys, so they are not included in this proposal.

Please see attachments detailing the transaction costs and the Phase II budget.

VII. Deliverables. Describe work product (reports, habitat restoration, etc.) which will result from this project. How will “success” for this project be monitored or demonstrated?

The application proposes to purchase real estate in order to protect and enhance current natural resource values. Direct success of this project would be measured by the degree of disturbance and general natural integrity of the property through time as it is enhanced and allowed to naturally recover from light forestry activity. Enhancements would include tree planting and riparian protection, and potentially instream habitat enhancement (e.g., increased complexity through LWD addition).

Indirect indications of success would be continued expansion and resilience of the Fish Creek bull trout population. Bull trout are monitored through established redd count surveys and population estimate sections.

VIII. Cultural Resources. Cultural Resource Management (CRM) requirements for any activity related to this proposal must be completed and documented to PPL Montana as a condition of any TAC grant. TAC funds may not be used for any land-disturbing activity, or the modification, renovation, or removal of any buildings or structures until the CRM consultation process has been completed. Agency applicants must submit a copy of the proposed project to a designated Cultural Resource Specialist for their agency. Private parties or non-governmental organizations are encouraged to submit a copy of their proposed project to a CRM consultant they may have employed. Private parties and non-governmental organizations may also contact the PPL Montana representative for further information or assistance. Applications submitted without this section completed, will be held by the TAC, without any action, until the information has been submitted. Summarize below how you will complete requirements for Cultural Resource Management:

A cultural resource survey has not been completed on either of the properties proposed for purchase. However, surveys were completed in 2009 at a much larger scale on ~ 28,000 acres of surrounding lands acquired by FWP to form the Fish Creek WMA and State Park. Although no ground disturbing activities are currently proposed, a cultural resource survey would be completed by FWP at the time of sale.

All proposals should be 5 pages or less in length and emailed (as Word file) to lmbabbott@pplweb.com or jhjourdonnais@pplweb.com

Further questions about Thompson Falls Project proposals may be addressed to: Brent Mabbott (406-533-3447) or Jon Jourdonnais (406-533-3443), PPL Montana, 45 Basin Creek Road, Butte, Montana 59701, Fax (406)-533-3401

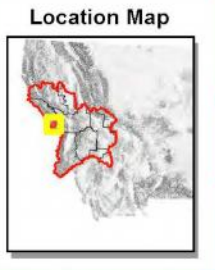
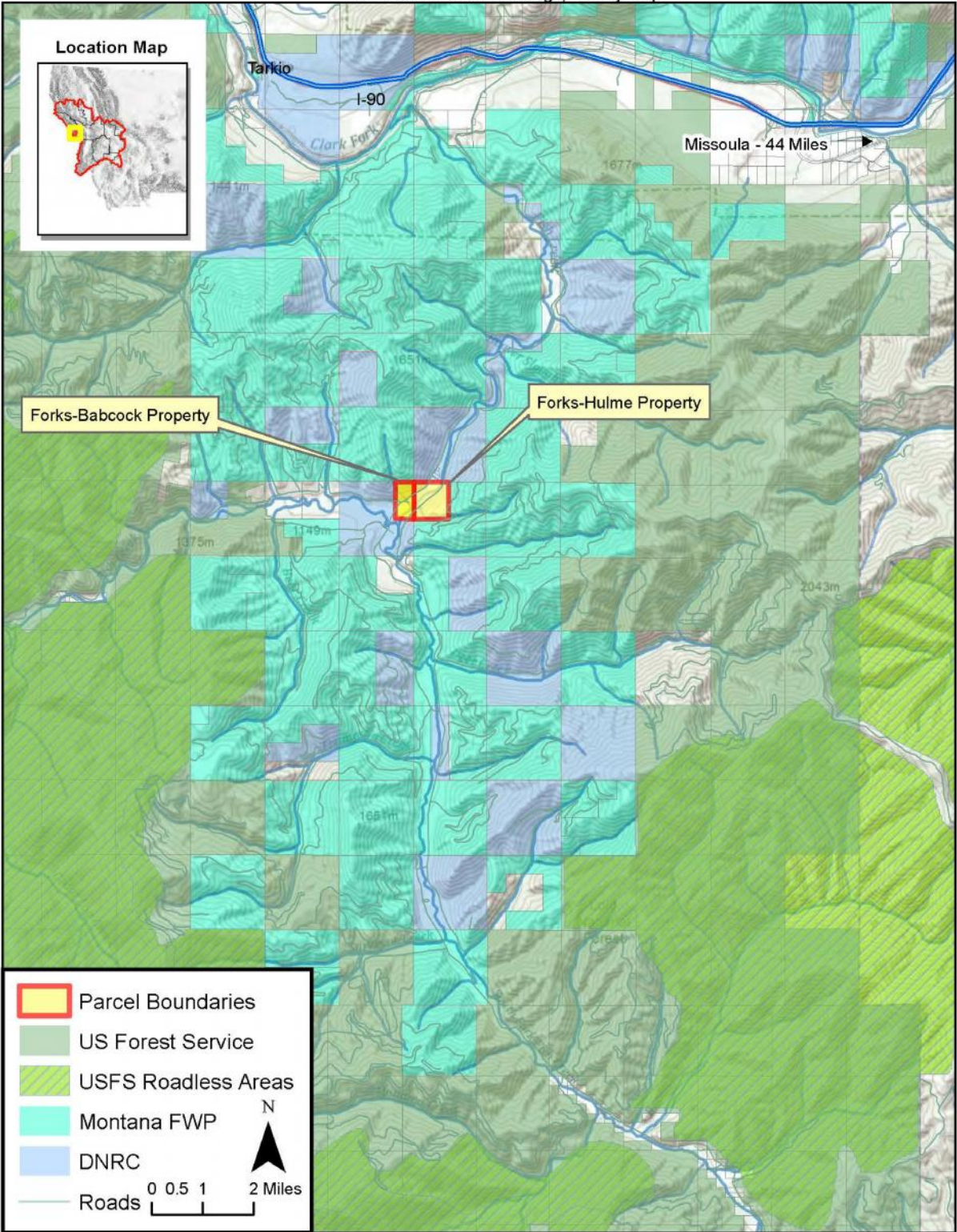
Detailed Transaction Costs and Phase II Budget

Main Stem Fish Creek Land Acquisition Transaction Costs:	Phase I	Phase II	Total Project
Appraisal	\$3,900	\$3,900	\$7,800
Title Guarantee	\$750	\$750	\$1,500
Mineral Research*	\$300	\$0	\$300
Baseline Assessment*	\$1,500	\$0	\$1,500
Phase 1 Environmental Assessment*	\$3,000	\$0	\$3,000
Other (legal fees)	\$750	\$750	\$1,500
Recording & Closing Fees	\$400	\$200	\$600
Total Transaction Costs	\$10,600	\$5,600	\$16,200

*In order to reduce costs the mineral research, baseline assessment and Phase 1 Environmental Assessment would be conducted for both land acquisitions simultaneously.

Main Stem Fish Creek Land Acquisition Phase II Budget			
Forks-Babcock (80 acres) Proposed			
Purchase Price		\$155,000	
Transaction Costs		\$5,600	
Total Costs		\$160,600	
Proposed Funding Sources			
Thompson Falls TAC (requested)		\$80,300	50%
Five Valleys Land Trust (secured)		\$30,000	19%
MT Fish & Wildlife Conservation Trust (requested)		\$10,000	6%
Private fundraising		\$40,300	25%
Total Fee Purchase Price		\$160,600	100%

Fish Creek - Forks Inholdings, Vicinity Map



Forks-Babcock Property

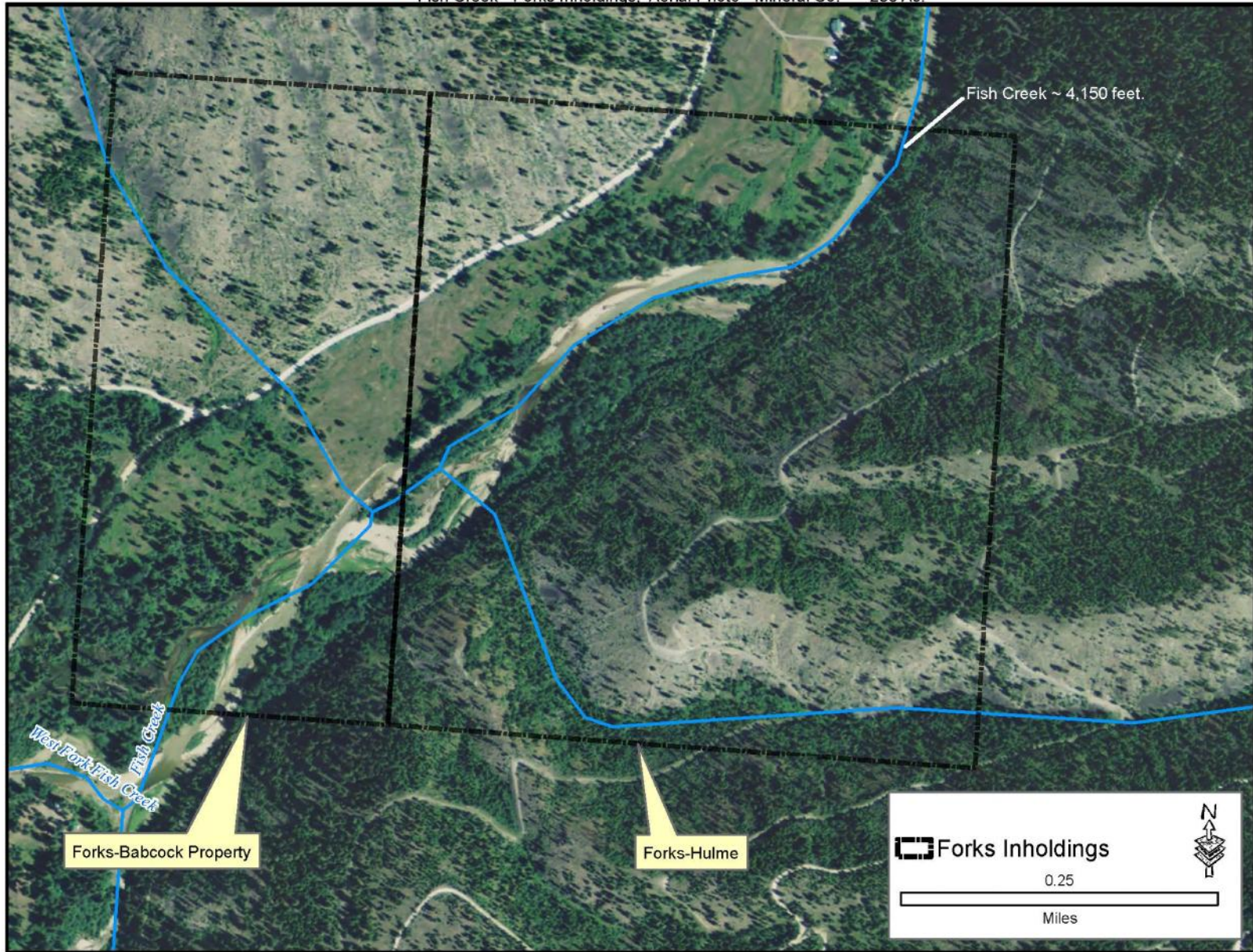
Forks-Hulme Property

	Parcel Boundaries
	US Forest Service
	USFS Roadless Areas
	Montana FWP
	DNRC
	Roads

0 0.5 1 2 Miles

N
▲

Fish Creek - Forks Inholdings, Aerial Photo - Mineral Co. - ~230 Ac.



Project Title:

Thompson Falls Reservoir and the Clark Fork River illegal introduction signs.

Proposal Submitted by:

Kenneth Breidinger
Fisheries Biologist
Montana Fish Wildlife and Parks

Location of Proposed Project:

Boat ramps and fishing access points between the Thompson Falls Dam and the Town of Paradise.

Total Project Cost: \$11,111.27

TAC Funds (Cost-Share) Requested: \$7,347.20

I. Introduction.

Illegal fish introductions have become a widespread problem in western Montana. In 201, eleven illegal sport fish introductions were identified in FWP's Region 1. Impacts caused by illegally introduced predators often include reductions in prey species, reductions in salmonids, and shifts in community structure (Colby and Hunter 1989).

Expanding walleye populations in Noxon reservoir has led to increased angler interest in walleye fishing and several anglers have expressed interest in expanding the walleye fishery into Thompson Falls Reservoir and the river above the reservoir. This and the large numbers of recent illegal introductions suggest that an illegal walleye introduction is a possibility.

Many anglers seem unaware of the legal and biological consequences of illegal introductions. Educational signboards placed at boat ramps and popular fishing access sights will inform anglers of these consequences and reduce the likelihood of upstream walleye expansion.

II. Objectives.

1. Minimize the risk of an illegal fish introduction into the project area.
2. Educate the public about risks posed by illegal fish introductions and other nonnative species.

This project meets the intent of the Interagency MOU by minimizing the chance of additional predation threats to downstream migrating juvenile bull trout. This project will also help prevent increased competition with adult bull trout and benefit the recreational fishery.

III. Methods.

Educational signboards will be installed at eightboat launches and popular fishing access points on Thompson Falls Reservoir and the Clark Fork River. Signboards will contain

information on the laws governing illegal introductions, potential impacts to the current fishery, and examples of fisheries impacted by illegal introductions.

IV. Schedule.

February-June 2012 – Design signs and prepare requisition.

July 2012 – Submit requisition and purchase signs.

August-September 2012 – Install signs at boat ramps and fishing access sights.

September-December – Report preparation

V. Personnel.

Project leader: Kenneth Breidinger, Fisheries Biologist, MTFWP

Fisheries Technician: Harvey Carlsmith, MTFWP

VI. Budget:

	PPL Cost	FWP Cost	Total Cost
Direct Labor		\$3,764.07	\$3,764.07
Direct Overhead	\$0.00		\$0.00
Travel and Living	\$160.00		\$160.00
Materials	\$6,400.00		\$6,400.00
Other Direct Expenses	\$0.00		\$0.00
Subtotal	\$6560.00	\$3,764.07	10,324.07
Administrative Overhead (12%)	\$787.20		\$787.20
Total	\$7347.20	\$3,764.07	\$11,111.27

VII. Deliverables. **All funded projects are required to submit an annual report by January 15 of the year following the project start.**

- Signage will be placed at boat ramps and popular fishing access sites.
- A report summarizing the outcome of this project will be submitted

January 15, 2013.

VIII. Cultural Resources.

CRM consultation is not required for this project.

Colby, P., and C. Hunter. 1989. Environmental assessment of the introduction

of walleye beyond their current range
in Montana. Montana Department of
Fish, Wildlife, and Parks, Helena

All proposals should be 5 pages or less in length and emailed (as Word file) to
lmbabbott@pplweb.com or jhjourdonnais@pplweb.com

Further questions about Thompson Falls Project proposals may be addressed to: Brent
Mabbott (406-533-3447) or Jon Jourdonnais (406-533-3443), PPL Montana, 45 Basin
Creek Road, Butte, Montana 59701, Fax (406)-533-3401