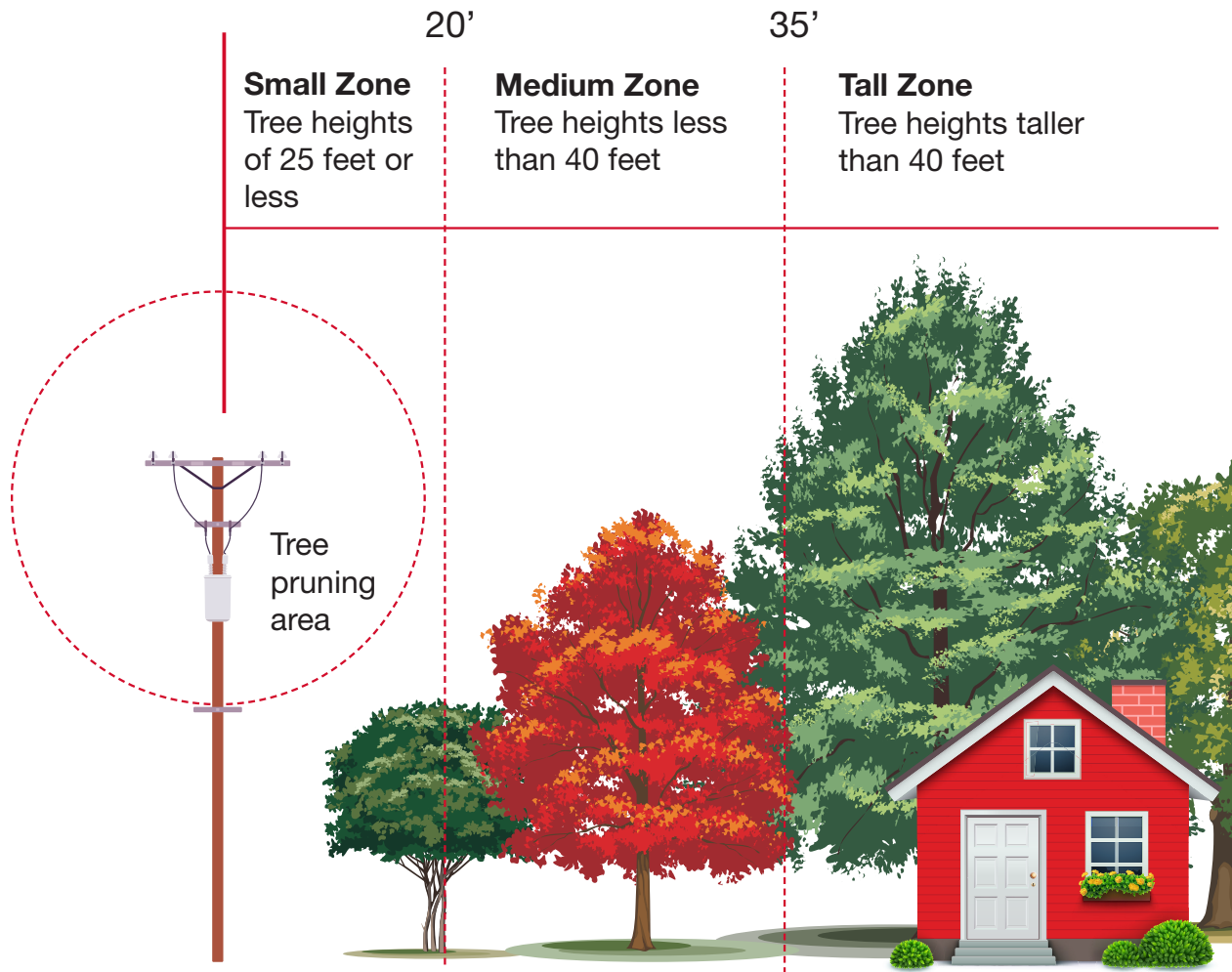


Plan before you plant



Planting the right tree in the right place

Overhead power lines - Before you plant a tree, know where overhead power lines are located and plant at least 20 feet away. Trees that grow taller than 40 feet should be planted more than 35 feet away.

Transformers - If your yard has a ground-level transformer (a large, green, metal box), be sure to leave room for our crews to access the transformer. Plant your shrubs at least 10 feet away from the front, and 2 feet away from the sides and back.

Stay safe around power lines - You should always keep people, equipment and objects at least 10 feet away from power lines. If you're using a ladder to trim a tree, be sure you're keeping yourself and your ladder away from overhead lines. Never attempt to remove a fallen tree or branch from a power line. You could be seriously injured or killed. If a tree or branch does come in contact with a power line, keep yourself and others away from the tree and call 911.



Call before you dig

Before planting a tree, call 811 or visit call811.com to have underground utilities located. This service is free and calling before you dig is required by law. Call at least two full business days before you start any digging project. Even on your property and in your yard, damages caused by hitting an underground utility can be expensive and even deadly. Once utilities are marked, be sure to hand excavate within 18 inches on each side of markings.



**Know what's below.
Tap, Click, or Call
811 Before you dig.**

If you ever hit a gas line, call 911 immediately. Even minor damage to a pipeline can result in future leaks.



Sign up for Budget Billing

Budget Billing takes the mystery out of what your monthly energy payment will be. With Budget Billing, your NorthWestern Energy bill is the same every month. The amount is calculated using your average annual bill amount based on your past 12 months of usage and current rates.

Use our online Budget Billing Payment Calculator to get an estimate of what your monthly budget bill would be – NorthWesternEnergy.com/BudgetBilling.

Sign up online or give us a call at 888-467-2669.

*We'll review your account at least twice a year and your payment amount may fluctuate based on your usage patterns and/or rates currently in effect.



Concerned about winter energy bills?

The extreme weather that gripped Montana the first half of February was immediately followed by extreme cold throughout the Midwest. Record energy demand during this time caused natural gas prices to spike. NorthWestern Energy purchased some natural gas for its Montana customers from the market, and our customers will see an increase in the cost of the natural gas supply on their bills.

NorthWestern Energy Montana residential and commercial natural gas customers will see that higher cost of the natural gas supply reflected on their bill on the item "Natural Gas Supply." The increase will be \$0.10 per therm in March, about a \$10 increase on the average residential bill. Customers will have an additional \$0.10 per therm increase in April, and a smaller increase in May. By July, we expect Natural Gas Supply rates to return to more normal levels.

We encourage anyone concerned about their ability to pay a higher energy bill to contact NorthWestern Energy's customer service department.